

2025



INTERACTIVE TOUCH TABLE



POLING

POLING INTELLIGENT DIGITAL EQUIPMENT CO.,LTD





POLING INTELLIGENT COMPANY:

Shenzhen Poling Intelligent Company is a leading innovator in the interactive technology sector, dedicated to the research, development, and manufacturing of high-quality interactive touch table products. With a fully equipped R&D and sales center located in Shenzhen and a state-of-the-art production facility and testing laboratory spanning over 9,000 square meters in Jiangxi, we are positioned to deliver cutting-edge solutions to our clients.

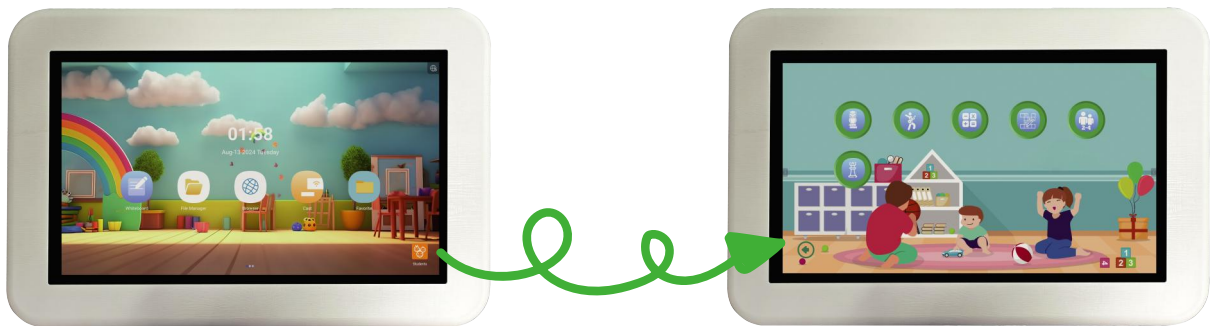
Our team comprises experienced product developers and skilled production personnel, ensuring a seamless process from concept to final product. We specialize in OEM and ODM services, partnering closely with our clients to meet their unique requirements. Our commitment to quality is reflected in our certifications, including CE, ROHS, WEEE, REACH, ERP, CCC, and ISO 9001:2015. We strive to enhance interactive learning and gaming experiences worldwide.

For who?

- Parents: Engaging educational tools for home learning.
- Educators: Versatile teaching aids for interactive classrooms.
- Childcare Centers: Supports early childhood development through play.
- Gift Givers: A unique and beneficial gift for special occasions.
- Schools: Incorporates innovative technology for enhanced student engagement.
- Libraries: Provides enriching educational resources for reading and learning.
- Nursing Homes: Offers engaging activities to promote mental and physical well-being for the elderly.
- Special Needs Therapy Centers: Facilitates therapeutic play and learning for children with special needs.

Kids Mode

Kids Mode includes a child-friendly icon for easy identification, making it simple for children to understand how to use it. The interface is designed with bright, vibrant colors to enhance visual appeal, and it offers a variety of playful, engaging wallpapers to personalize the experience for young users.



Parental Control

The PoliKids Table features robust parental controls that offer peace of mind for parents and teachers. With password protection, adults can manage access to content, while screen time controls promote healthy usage habits. The app blocker function restricts access to specific applications, ensuring a secure and focused learning environment for kids.



Schedule screen Time



Schedule internet



Daily Usage limits



Individual app limit



App Name	Usage Status	Control
ParentManager	Unusable	Disabled
Marbles	Unusable	Disabled
Drum	Unusable	Disabled
PoliKids	Unusable	Disabled
Sokoban	Unusable	Disabled

Empowering Kids with the Skills for Tomorrow

The PoliKids Table offers a wide variety of applications that support learning across multiple subjects, particularly in STEAM (Science, Technology, Engineering, Arts, and Mathematics).



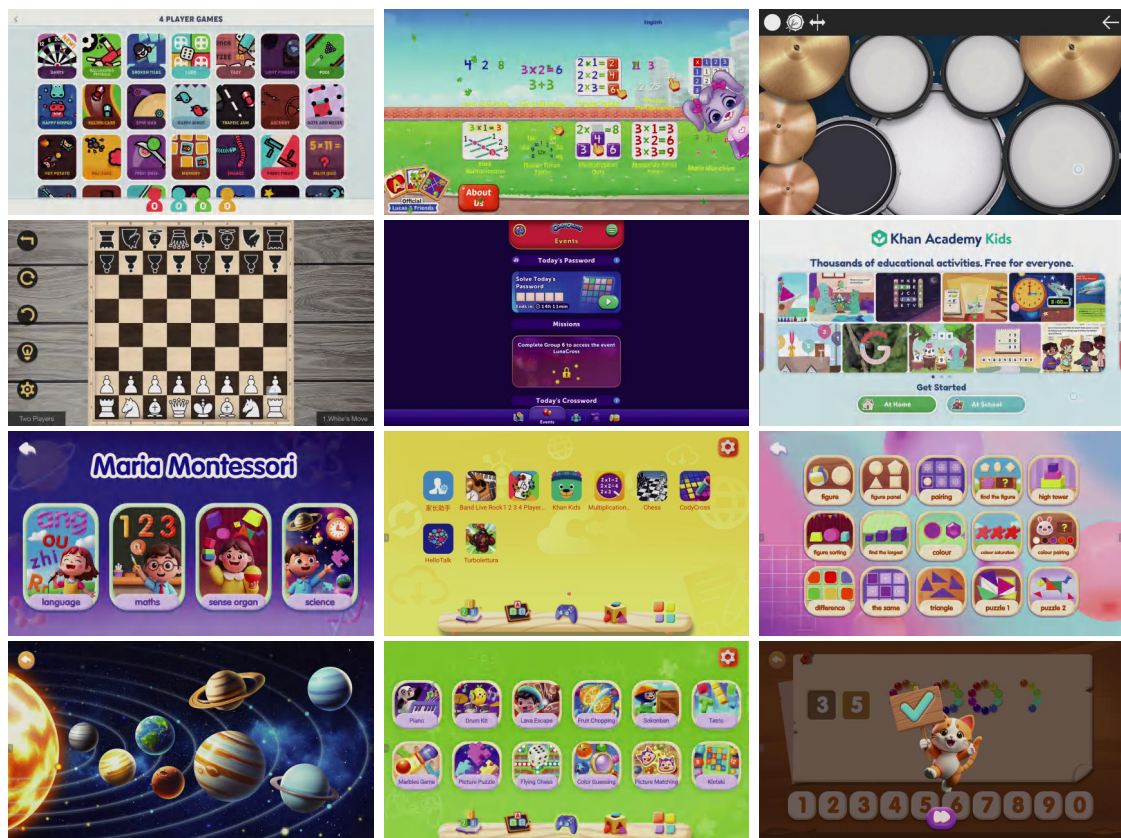
Educational Apps for kids and teens

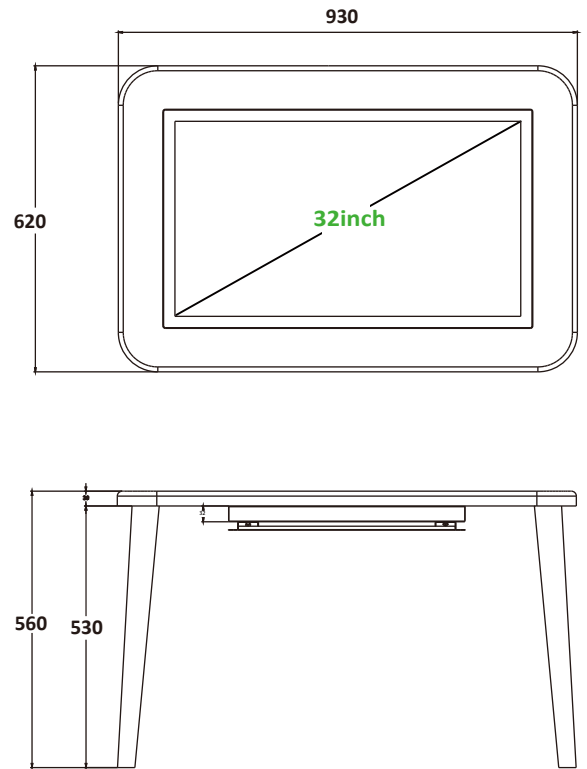
Apps and games specially designed for young children have been created by a team of professionals and learning experts. They feature new nursery rhymes that guide kids in exploring new worlds and expanding their knowledge. You can monitor your child's progress from a dedicated area.



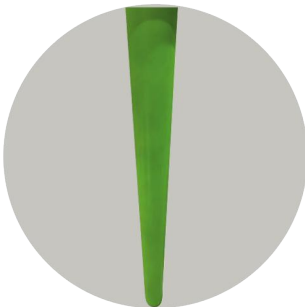
Educational mode for kids and teens

Discover endless possibilities with the built-in Google Play on all PoliKids Tables. Explore a vast selection of apps, ranging from educational tools to entertaining games and beyond. Just download and enjoy!





Colores Disponibles



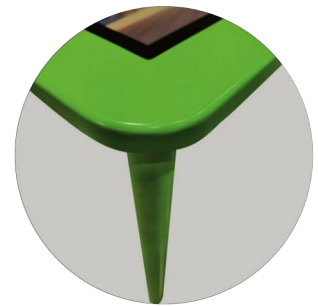
Detachable Legs

Detachable table legs save space for moving and transporting



Hidden compartment

Hidden WIFI antenna, button and interface operation



Ergonomic design

Painted wooden table with rounded corners to prevent injuries from accidental falls in the classroom.



Android14



Tempered glass



Resistant to liquid spills

Features highlight:



Multi-touch detection



No pressure required for touch



Slim and robust design



Plug & play
No calibration required.



Preloaded ready to use applications



Equipped with Android system



Easy set-up



Support individual and group
learning



Audio 5W*2 built in stereo speakers

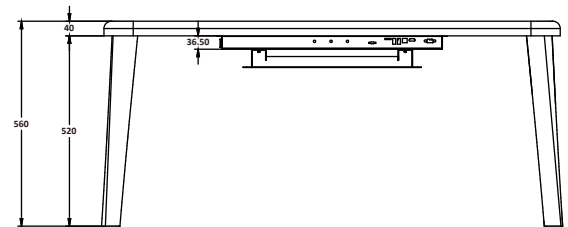
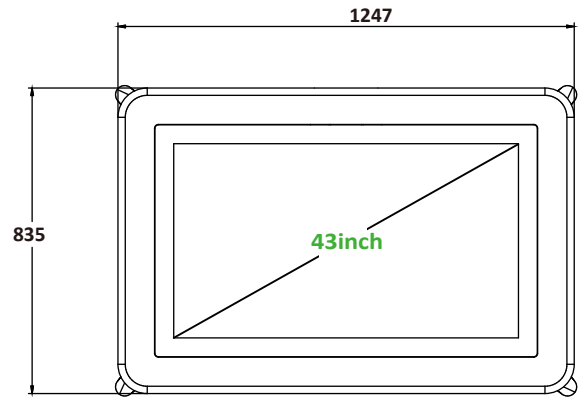


Wireless

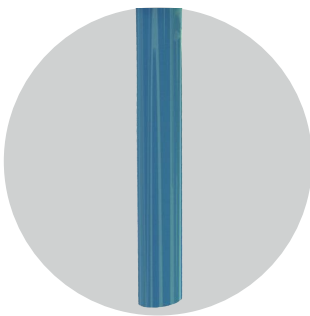


ECO Series

ET43A56P01



Color Selection



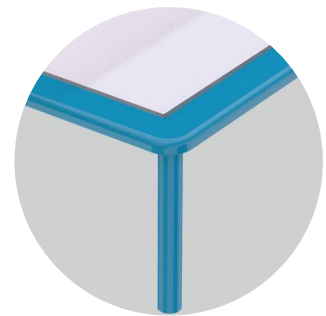
Detachable Legs

Detachable table legs save space for moving and transporting



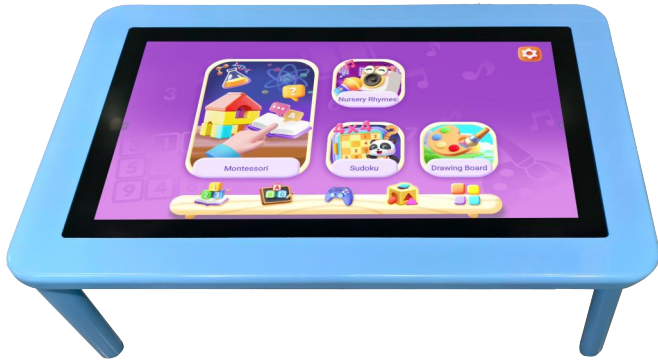
Hidden compartment

Hidden WIFI antenna, button and interface operation



Ergonomic design

Painted wooden table with rounded corners to prevent injuries from accidental falls in the classroom.



Android14



Tempered glass



Resistant to liquid spills

Features highlight:



Multi-touch detection



No pressure required for touch



Slim and robust design



Plug & play
No calibration required.



Preloaded ready to use applications



Equipped with Android system



Easy set-up



Support individual and group learning



Audio 5W*2 built in stereo speakers



Wireless





Android14



Tempered glass



Resistant to liquid spills

Features highlight:



Multi-touch detection



No pressure required for touch



Slim and robust design



Plug & play
No calibration required.



Preloaded ready to use applications



Equipped with Android system



Easy set-up



Support individual and group
learning



Audio 5W*2 built in stereo speakers

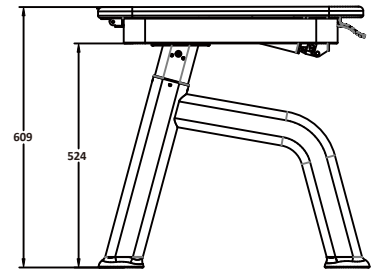
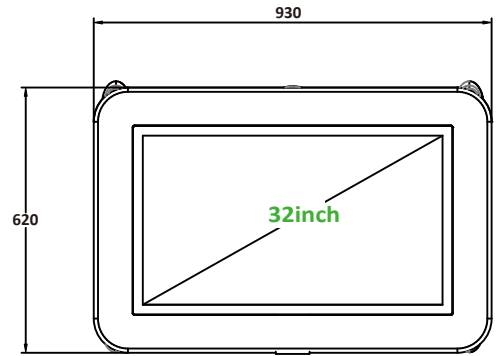


Wireless



DOCTOR SERIES

DT32A56Y01



Spin button

Change screen angle with one click



Height adjustment

You can adjust the height as you like



Ergonomic design

This combination not only retains the natural beauty of wood, but also incorporates the modern feel of metal. Whether it is placed in a home study or a school, it can become a beautiful landscape.



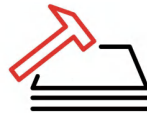
Hidden compartment

Hidden WIFI antenna, button and interface operation





Android14



Tempered glass



Resistant to liquid spills

Features highlight:



Multi-touch detection



No pressure required for touch



Slim and robust design



Plug & play
No calibration required.



Preloaded ready to use applications



Equipped with Android system



Easy set-up



Support individual and group learning



Audio 5W*2 built in stereo speakers

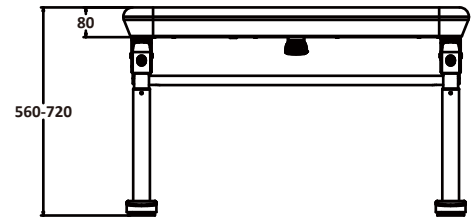
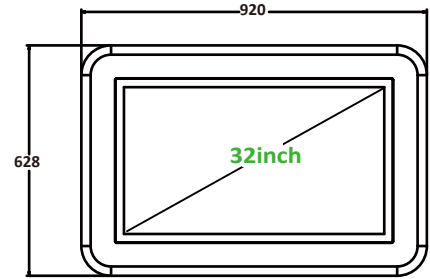


Wireless



MASTER Series

MV32A56Y01



Spin button

Change screen angle with one click



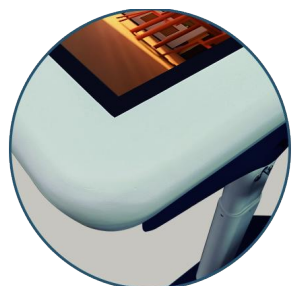
Height adjustment

You can adjust the height as you like



Ergonomic design

Painted wooden table with rounded corners to prevent injuries from accidental falls in the classroom.



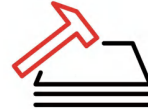
Hidden compartment

Hidden WIFI antenna, button and interface operation





Android14



Tempered glass



Resistant to liquid spills

Features highlight:



Multi-touch detection



No pressure required for touch



Slim and robust design



Plug & play
No calibration required.



Preloaded ready to use applications



Equipped with Android system



Easy set-up



Support individual and group
learning

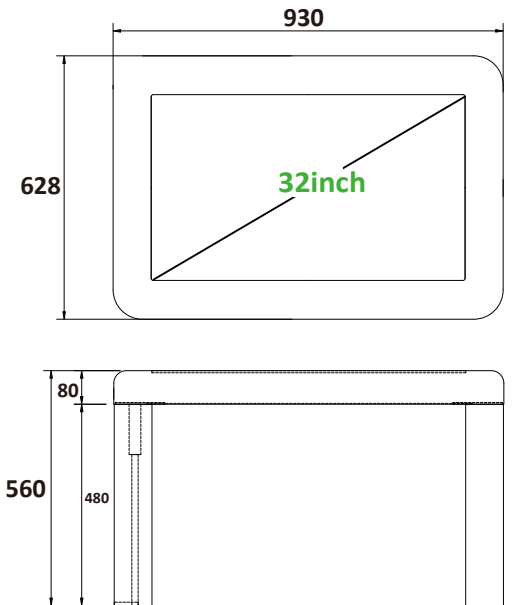


Audio 5W*2 built in stereo speakers

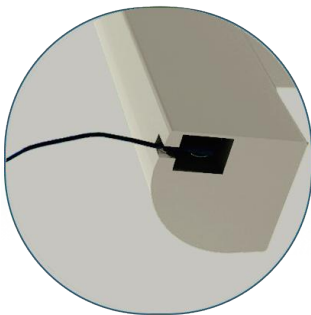


Wireless





Color Selection



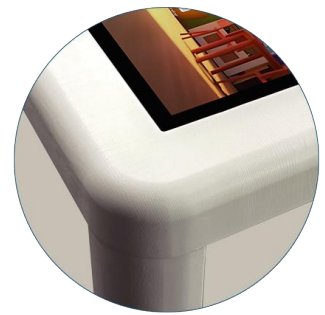
Hidden cable design

Cable tangles avoided, the power cable runs neatly and unobtrusively down the inside of the touchtable leg.



Hidden compartment

Hidden WiFi antenna, button and interface operation



Ergonomic design

Painted wooden table with rounded corners to prevent injuries from accidental falls in the classroom.



Android14



Tempered glass



Resistant to liquid spills

Features highlight:



Multi-touch detection



No pressure required for touch



Slim and robust design



Plug & play
No calibration required.



Preloaded ready to use applications



Equipped with Android system



Easy set-up



Support individual and group
learning

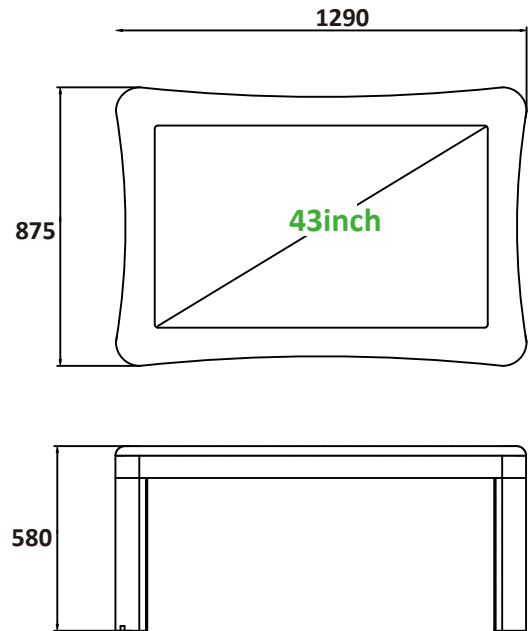


Audio 5W*2 built in stereo speakers

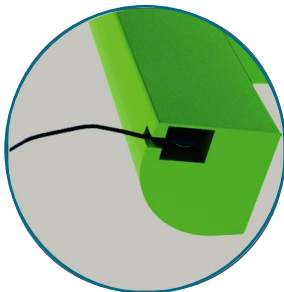


Wireless



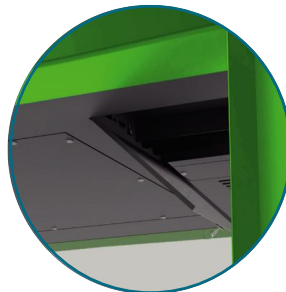


Color Selection



Hidden cable design

Cable tangles avoided, the power cable runs neatly and unobtrusively down the inside of the touchtable leg.



Hidden compartment

Hidden WIFI antenna, button and interface operation



Rounded shape design

Rugged and rounded solid wood construction, no harm and more safety



Android14



Tempered glass



Resistant to liquid spills

Features highlight:



Multi-touch detection



No pressure required for touch



Slim and robust design



Plug & play
No calibration required.



Preloaded ready to use applications



Equipped with Android system



Easy set-up



Support individual and group
learning

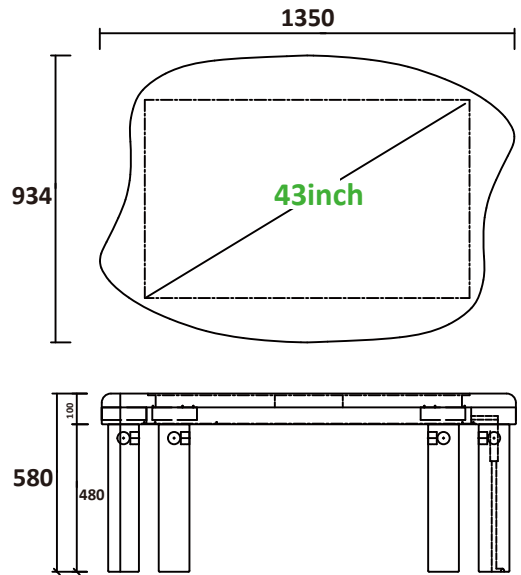


Audio 5W*2 built in stereo speakers

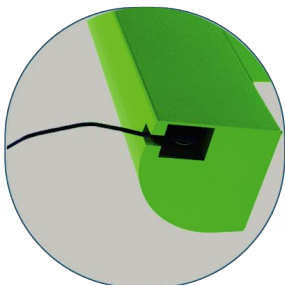


Wireless



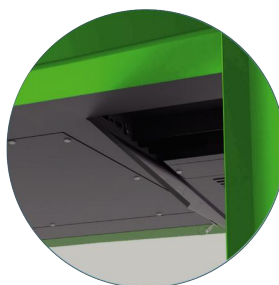


Color Selection



Hidden cable design

Cable tangles avoided, the power cable runs neatly and unobtrusively down the inside of the touchtable leg.



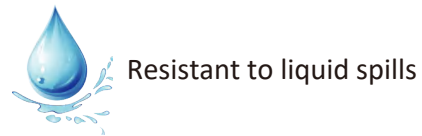
Hidden compartment

Hidden WiFi antenna, button and interface operation



Rounded shape design

Rugged and rounded solid wood construction, no harm and more safety



Features highlight:



Multi-touch detection



No pressure required for touch



Slim and robust design



Plug & play
No calibration required.



Preloaded ready to use applications



Equipped with Android system
Equipped with Windows system



Easy set-up



Support individual and group
learning



Audio 5W*2 built in stereo speakers

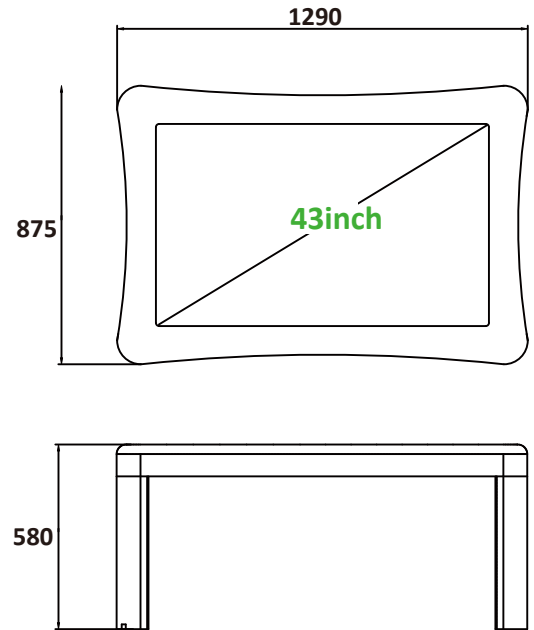


Wireless

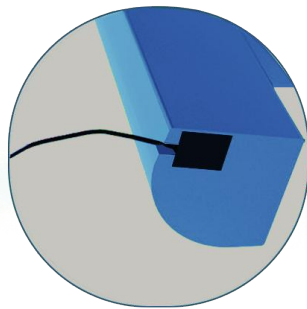


CLASSIC Series

CC43D58P01



Color Selection



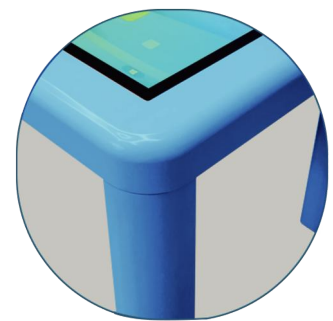
Hidden cable design

Cable tangles avoided, the power cable runs neatly and unobtrusively down the inside of the touchtable leg.



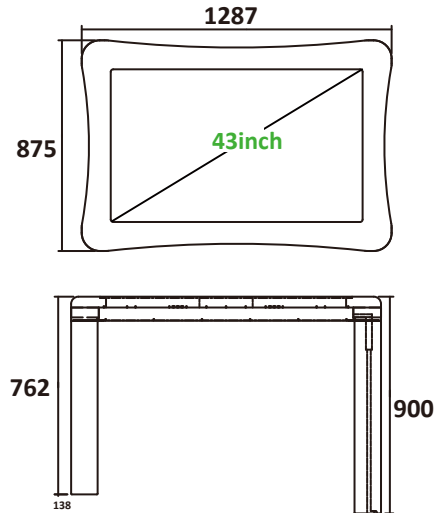
Hidden compartment

Hidden WiFi antenna, button and interface operation



Ergonomic design

Painted wooden table with rounded corners to prevent injuries from accidental falls in the classroom.



Features highlight:



Multi-touch detection



No pressure required for touch



Slim and robust design



Plug & play
No calibration required.



Preloaded ready to use applications



Equipped with Windows system



Easy set-up



Support individual and group
learning



Audio 5W*2 built in stereo speakers

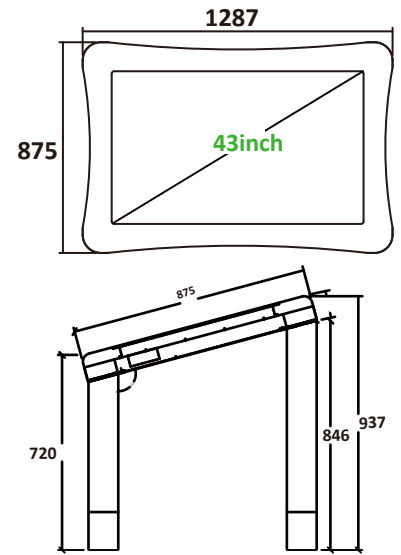


Wireless



CLASSIC Series

CC43W90B04



Windows11



Tempered glass



Resistant to liquid spills

Hidden compartment

Hidden WIFI antenna, button and interface operation



Ergonomic design

Painted wooden table with rounded corners to prevent injuries from accidental falls in the classroom.



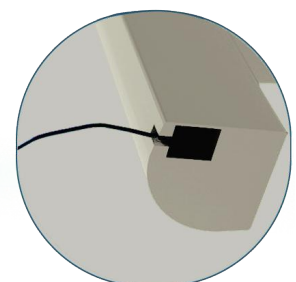
Side legs with wheels

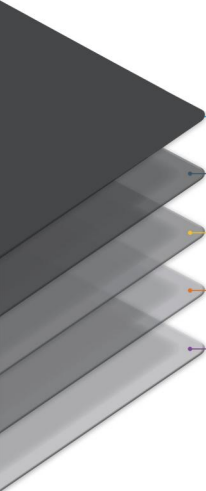
Move it quickly and easily from room to room with just a slight lift.








Hidden cable design

Cable tangles avoided, the power cable runs neatly and unobtrusively down the inside of the touchtable leg.



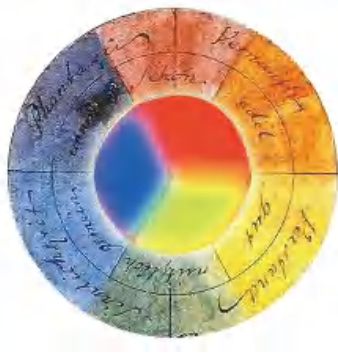


-  **Blue Light Reduction**
-  **Reversible Glossy or Matte Finish**
-  **Glare Reduction**
-  **Fingerprint and Dust Protection**
-  **Scratch Resistance**



Crafted from Fine Wood, Warmth Embraces Children's Growth

Poling Smart Table employs oak material, thoughtfully chosen to accompany children in their growth and development.



Eco-friendly Paint Cares for Children

Poling Kids Smart Table Paints are famous for their vivid colors that enchant kids' imaginations while ensuring safety and eco-friendliness. VOC-free and devoid of toxic ingredients, these paints provide a healthy creative outlet for children.

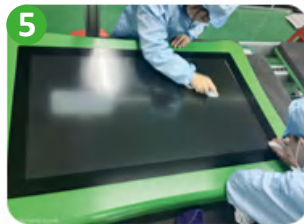
Durable & Stylish: Blister Material Tables for Long-Lasting Elegance

Poling kids smart table The blister material for tables combines durability with style, resisting scratches, deformation, and wear, ensuring your table stays in top shape for years to come.




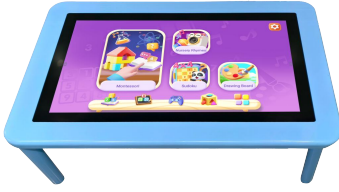
ORDER DIRECTLY FROM FACTORY




Testing & Packaging



Strong and Solid Package



Series	32" ECO Series	43" ECO Serie	
Picture			
Build-in system			
System Version	Android 14.0	Android 14.0	
Chipset	CPU: 8-cores A55 1.9Ghz; GPU: 4-cores Mali-G52	CPU: 8-cores A55 1.9Ghz; GPU: 4-cores Mali-G52	
RAM	4GB (optional: 8GB)	4GB (optional: 8GB)	
ROM	32GB (optional: 128GB)	32GB (optional: 128GB)	
Network	Ethernet & WIFI (2.4GHz/5GHz)	Ethernet & WIFI (2.4GHz/5GHz)	
Bluetooth	BT 5.0	BT 5.0	
Interface	USB2.0*2 / USB3.0*1 / HDMI IN*1 / Type-c2.0*1 / RJ45*1 / EARPHONE*1	USB2.0*2 / USB3.0*1 / HDMI IN*1 / Type-c2.0*1 / RJ45*1 / EARPHONE*1	
Touch Screen			
Touch technology	Capacitive touch	Capacitive touch	
Touch Point	20	20	
Surface Hardness	3.5±0.2mm tempered glass with hardness of Mohs level 6	4.5±0.2mm tempered glass with hardness of Mohs level 7	
LCD display			
Screen Size (diagonal)	32inch	43inch	
Resolution (pixels)	1080P FHD 1920*1080	4K UHD 3840*2160	
Active Area	698.4(H)*392.85(V)mm	941.184(H)*529.416(V)mm	
Brightness (typ.)	300cd/m2	300cd/m2	
Refresh Rate	60Hz	60Hz	
Contrast	1200:1 (typ.)	4000:1 (typ.)	
Viewing Angle	H: 178°; V: 178°	H: 178°; V: 178°	
ID & Material			
Material	Wooden desktop + Wooden legs + tempered glass cover screen	Wooden desktop + tempered glass cover screen + metal leg/bottom metal plate	
ID design feature	-Rounded outline, no any sharp corner;	-Rounded outline, no any sharp corner; -Solid wooden structure with lightweight design; -Support wall mount installation; -The detachable legs design of this touch table makes it easy to transport	
Color	Pink/light blue/light green/Custo	Green/Orginal wood color	
Power			
Power supply	100-240V AC, 50/60Hz	100-240V AC, 50/60Hz	
Power consumption (Watt)	≤90W	≤120W	
Standby Power (Watt)	≤0.5W	≤0.5W	
Audio frequency output (Watt)	8Ω5W*2	8Ω5W*2	
Environment			
Working temperature	0°C ~ 50°C	0°C ~ 50°C	
Storage temperature	-20°C ~ 60°C	-20°C ~ 60°C	
Working humidity	10%RH ~ 80%RH	10%RH ~ 80%RH	
Storage humidity	10%RH ~ 90%RH	10%RH ~ 90%RH	
Weight & Dimension			
Outline dimension	930(L)*620(W)*560	1247(L)*835(W)*560(H)mm	
Package dimension	1029(L) * 159(W) * 733(H)	1346(L) * 185(W) * 950(H)	
Net weight	23kgs	44kgs	
Gross weight	26kgs	48kgs	
Loading information	Standard 20GP container: 160PCS Standard 40HQ container: 380-400PCS	Standard 20GP container: 96PCS Standard 40HQ container: 208PCS	

Series	32" MASTER Series	32" DOCTOR Series	32" CLASSIC Series
Picture			
Build-in system			
System Version	Android 14.0	Android 14.0	Android 14.0
Chipset	CPU: 8-cores A55 1.9Ghz; GPU: 4-cores Mali-G52	CPU: 8-cores A55 1.9Ghz; GPU: 4-cores Mali-G52	CPU: 8-cores A55 1.9Ghz; GPU: 4-cores Mali-G52
RAM	4GB (optional: 8GB)	4GB (optional: 8GB)	4GB (optional: 8GB)
ROM	32GB (optional: 128GB)	32GB (optional: 128GB)	32GB (optional: 128GB)
Network	Ethernet & WIFI (2.4GHz/5GHz)	Ethernet & WIFI (2.4GHz/5GHz)	Ethernet & WIFI (2.4GHz/5GHz)
Bluetooth	BT 5.0	BT 5.0	BT 5.0
Interface	USB2.0*2 / USB3.0*1 / HDMI IN*1 / Type-c2.0*1 / RJ45*1 / EARPHONE*1	USB2.0*2 / USB3.0*1 / HDMI IN*1 / Type-c2.0*1 / RJ45*1 / EARPHONE*1	USB2.0*2 / USB3.0*1 / HDMI IN*1 / Type-c2.0*1 / RJ45*1 / EARPHONE*1
Touch Screen			
Touch technology	Capacitive touch	Capacitive touch	Capacitive touch
Touch Point	20	20	20
Surface Hardness	3.5±0.2mm tempered glass with hardness of Mohs level 6	3.5±0.2mm tempered glass with hardness of Mohs level 6	3.5±0.2mm tempered glass with hardness of Mohs level 6
LCD display			
Screen Size (diagonal)	32inch	32inch	32inch
Resolution (pixels)	1080P FHD 1920*1080	1080P FHD 1920*1080	1080P FHD 1920*1080
Active Area	698.4(H)*392.85(V)mm	698.4(H)*392.85(V)mm	698.4(H)*392.85(V)mm
Brightness (typ.)	300cd/m2	300cd/m2	300cd/m2
Refresh Rate	60Hz	60Hz	60Hz
Contrast	1200:1 (typ.)	1200:1 (typ.)	1200:1 (typ.)
Viewing Angle	H: 178°; V: 178°	H: 178°; V: 178°	H: 178°; V: 178°
ID & Material			
Material	Wooden desktop + tempered glass cover screen + metal leg/bottom metal plate	Wooden desktop + tempered glass cover screen + metal leg/bottom metal plate	Wooden desktop + tempered glass cover screen + metal leg/bottom metal plate
ID design feature	- Rounded outline, no any sharp corner; - Manual Lifiable legs to adjust 56cm to 76cm height of desktop, Manual rotatable desktop to adjust 0° to 48° to display; - Optional wheels for legs, easy to move;	- Rounded outline, no any sharp corner; - Manual Lifiable legs to adjust 56cm to 78cm height of desktop, Manual rotatable desktop to adjust 0° to 54° to display;	- Rounded outline, no any sharp corner; - Detachable legs to save shipment cost, easy to install;
Color	White/Custom	Pink/light blue/light green/Custom	White/Green/Custom
Power			
Power supply	100~240V AC, 50/60Hz	100~240V AC, 50/60Hz	100~240V AC, 50/60Hz
Power consumption (Watt)	≤90W	≤90W	≤90W
Standby Power (Watt)	≤0.5W	≤0.5W	≤0.5W
Audio frequency output (Watt)	8Ω5W*2	8Ω5W*2	8Ω5W*2
Environment			
Working temperature	0°C ~ 50°C	0°C ~ 50°C	0°C ~ 50°C
Storage temperature	-20°C ~ 60°C	-20°C ~ 60°C	-20°C ~ 60°C
Working humidity	10%RH ~ 80%RH	10%RH ~ 80%RH	10%RH ~ 80%RH
Storage humidity	10%RH ~ 90%RH	10%RH ~ 90%RH	10%RH ~ 90%RH
Weight & Dimension			
Outline dimension	930(L)*628(W)*560 (max 760) (H)mm	930(L)*628(W)*560 (max 780) (H)mm	930(L)*628(W)*560(H)mm
Package dimension	1030(L) * 350(W) * 730(H)	1030(L) * 350(W) * 730(H)	1236(L) * 214(W) * 744(H)
Net weight	40kgs	44kgs	40kgs
Gross weight	45kgs	48kgs	45kgs
Loading information	Standard 20GP container: 80PCS Standard 40HQ container: 192PCS	Standard 20GP container: TBD Standard 40HQ container: TBD	Standard 20GP container: 88PCS Standard 40HQ container: 198PCS

43INCH TOUCH TABLE SPEC



Series	43" CLASSIC-H58 Series	43" CLASSIC-CS Series	43" CLASSIC-H90 Series
Picture			
Build-in system			
System Version	Android 14.0 Optional: Windows 11/Dual system	Android 14.0 Optional: Windows 11/Dual system	Windows 11 Pro 64 (Optional: Android 14.0/Dual System)
Chipset	CPU: 8-cores A55 1.9Ghz; GPU: 4-cores Mali-G52	CPU: 8-cores A55 1.9Ghz; GPU: 4-cores Mali-G52	Intel core i5 12gen
RAM	4GB (optional: 8GB)	4GB (maximum 8GB)	DDR4 8GB (optional: 16/32GB)
ROM	32GB (optional: 128GB)	32GB (maximum 128GB)	256G SSD M.2 (optional: 512GB/1TB/2TB)
Network	Ethernet & WIFI (2.4GHz/5GHz)	Ethernet & WIFI (2.4GHz/5GHz)	Ethernet & WIFI (2.4GHz/5GHz)
Bluetooth	BT 5.0	BT 5.0	BT 5.0
Interface	USB2.0*1 / USB3.0*1 / Type-c2.0*1 / RJ45*1 / HDMI IN*1 / TOUCH*1 / COM*1 / TF*1	USB2.0*1 / USB3.0*1 / Type-c2.0*1 / RJ45*1 / HDMI IN*1 / TOUCH*1 / COM*1 / TF*1	USB-A 3.0 *2, USB-A 2.0* 2, Type-C 2.0*1, RJ45, HDMI-OUT, Earphone
Touch Screen			
Touch technology	Capacitive touch	Capacitive touch	Capacitive touch
Touch Point	20	32	40
Surface Hardness	4.5±0.2mm tempered glass with hardness of Mohs level 7	4.5±0.2mm tempered glass with hardness of Mohs level 7	4.5±0.2mm tempered glass with hardness of Mohs level 7
LCD display			
Screen Size (diagonal)	43inch	43inch	43inch
Resolution (pixels)	4K UHD 3840*2160	4K UHD 3840*2160	4K UHD 3840*2160
Active Area	941.184(H)x529.416(V)mm	941.184(H)x529.416(V)mm	941.184(H)x529.416(V)mm
Brightness (typ.)	300cd/m2	300cd/m2	300cd/m2
Refresh Rate	60Hz	60Hz	60Hz
Contrast	4000:1 (typ.)	4000:1 (typ.)	4000:1 (typ.)
Viewing Angle	H: 178°; V: 178°	H: 178°; V: 178°	H: 178°; V: 178°
ID & Material			
Material	Wooden desktop + tempered glass cover screen + metal leg/bottom metal plate	Wooden desktop & legs+ tempered cover glass + bottom metal plate	Wooden desktop + tempered glass cover screen + metal leg/bottom metal plate
ID design feature	-Rounded outline, no any sharp corner; -Detachable legs to save shipment cost, easy to install; -Optional wheels for legs, easy to move;	-Rounded outline, no any sharp corner; -Detachable legs to save shipment cost, easy to install; -Optional wheels for legs, easy to move;	-Rounded outline, no any sharp corner; -Detachable legs to save shipment cost, easy to install; -Optional wheels for legs, easy to move;
Color	White/Support customization	Support customization	White/Support customization
Power			
Power supply	100~240V AC, 50/60Hz	100~240V AC, 50/60Hz	100~240V AC, 50/60Hz
Power consumption (Watt)	≤160W	≤120W	≤120W
Standby Power (Watt)	≤0.5W	≤0.5W	≤3W
Audio frequency output (Watt)	8Ω5W*2	8Ω5W*2	8Ω5W*2
Environment			
Working temperature	0°C ~ 50°C	0°C ~ 50°C	0°C ~ 50°C
Storage temperature	-20°C ~ 60°C	-20°C ~ 60°C	-20°C ~ 60°C
Working humidity	10%RH ~ 80%RH	10%RH ~ 80%RH	10%RH ~ 80%RH
Storage humidity	10%RH ~ 90%RH	10%RH ~ 90%RH	10%RH ~ 90%RH
Weight & Dimension			
Outline dimension	1290(L)*875(W)*580(H)mm	1350(L)*934(W)*580(H)mm	1290(L)*875(W)*900(H)mm
Package dimension	Table desktop: 1416(L)* 212(W)* 1007(H)mm Leg: 615(L)* 430(W)* 120(H)mm	1592(L)* 232(W)* 1053(H)mm	Table desktop: 1416(L)* 212(W)* 1007(H)mm Leg: 996(L)* 470(W)* 140(H)mm
Net weight	60kgs	64kgs	66kgs
Gross weight	Table desktop: 52kgs Leg: 13kgs	70kgs	Table desktop: 52kgs Leg: 19kgs
Loading information	Standard 20GP container: 50PCS Standard 40HQ container: 143PCS	Standard 20GP container: TBD Standard 40HQ container: TBD	Standard 20GP container: 45PCS Standard 40HQ container: 130PCS



POLING

Tel: (86) 0755-23763072

Email: info@polingdisplay.com

Web: www.polingdisplay.com

SHENZHEN POLING INTELLIGENT DIGITAL EQUIPMENT CO.,LTD

Add: No.5 Guansheng 2nd Road, Longhua District, Shenzhen, China