

Creator Series Self-Ordering Kiosk

Self-Ordering Kiosk Machine | Android 11 Touchscreen Terminal with 80mm Receipt Printing

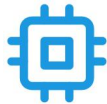


15.6" Display

18.5"/21.5"/23.8"



Android 11 OS



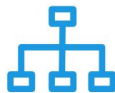
Rockchip RK3568



1D/2D Scanner



Built-in Printer



Abundant ports



15.6" / 18.5" / 21.5" / 23.8" 1920*1080 Display



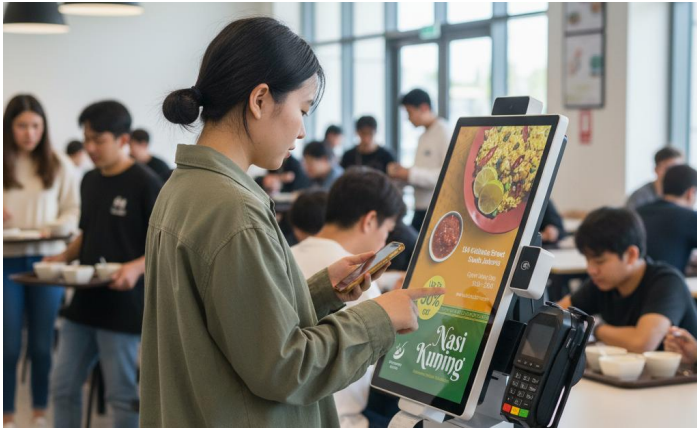
Built - in 80MM printer



1D/2D barcode scanner



Supports multiple installation methods



Cafeterias & Canteens



Convenience Store Ordering



Quick-Service Restaurants Kiosk



Supermarket Self-Checkout

Main Feature

- ◆ **Self-Ordering Kiosk:** Cuts Queues And Boosts Throughput During Peak Service Hours.
- ◆ **Android 11 Platform:** Stable RK3568 With Upgrades To RK3399/RK3588 For Growth.
- ◆ **Self-Ordering Ready:** Customize Items, Modifiers And Combos To Boost Basket Size.
- ◆ **80mm Thermal Print:** Prints Crisp Receipts And Labels At Service Counter Speeds.
- ◆ **Wall-Mounted Design:** Slim Terminal Fits Aisles, Pillars And Tight Retail Corners.
- ◆ **Modular Peripherals:** 1D/2D Scanner, NFC Reader, 1080P Camera, POS Cradle.
- ◆ **Rich I/O & Ports:** USB2.0/USB3.0, COM, Optional RS422/485, HDMI/VGA/EDP.
- ◆ **Scalable Hardware:** Intel I5/I7 Options, DDR3/DDR4 Up To 32GB, SSD To 1TB.
- ◆ **Retail-Grade Uptime:** Robust Build And Windows Management For Multi-site Rollouts.

Technical Specifications

Item	Specification
Processor / CPU	Rockchip RK3568
Operating System	Android 11 OS
Memory & Storage	2GB RAM+ 16GB ROM
Main Display	15.6"/18.5"/21.5"/23.8" capacitive touchscreen (1920*1080)
Scanner	1D/2D barcode scanner optional
Printer	Built-in 80mm thermal printer optional
Card reader	Optional
Camera	Optional
I/O Ports	USB ×6, LAN ×1,HDMI×1 ,COMx1,DC-in ×1
Networking	Gigabit Ethernet; optional Wi-Fi/Bluetooth via adapter
Power	AC 110-220V 2A
Environmental	Operating 0°C–40°C; Storage –20°C–60°C; 10%–90% RH non-condensing; ESD/Shock: TBD
Recommended Accessories	Scanner,printer,Floor stand,POS terminal holder,NFC,Face recognition camera

I/O Layout (Reference)



6 x USB



1 x HDMI



1 x COM



1 x RJ45



1 x Audio



1 x DC