

# Slim Series Check out Kiosk

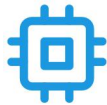
Slim Series Check Out Kiosk, Android 11 RK3568, 21.5"/27"/32" Touch, 80mm Printer, 4G/Wi-Fi/BLE



21.5" Display  
27"/32" HD



Android 11 OS



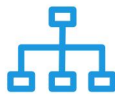
Rockchip RK3568



1D/2D Scanner



Built-in Printer



Abundant ports



21.5" / 27" / 32" 1920\*1080 Display



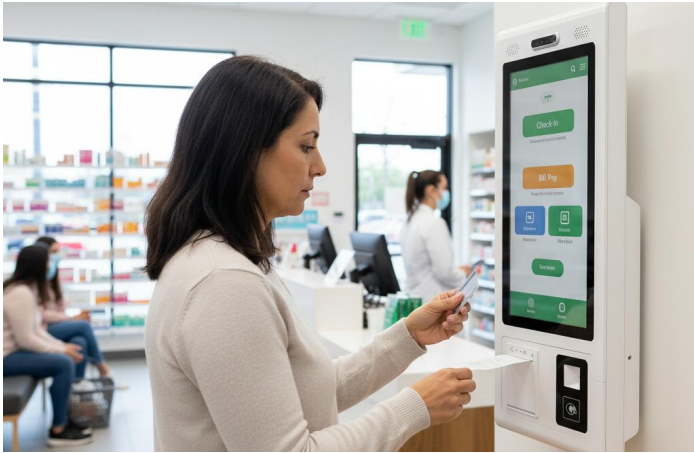
Built - in 80MM printer



1D/2D barcode scanner



Supports multiple installation methods



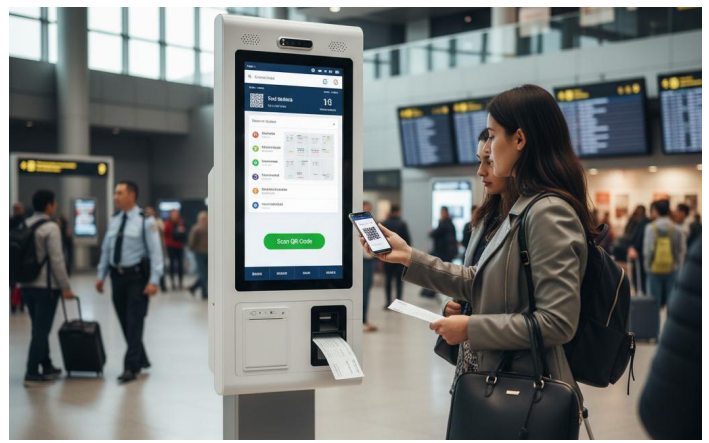
Pharmacy Service Desk Kiosk



Restaurant Self Pay Kiosk



Retail Check Out Kiosk



Ticketing Digital Kiosk

## Main Feature

- ◆ **Check Out Kiosk:** FHD Touch And Fast Fast UI Streamline Peak- hour Checkout.
- ◆ **Self Pay Kiosk:** 3D Face Recognition And QR Pay Speed Transactions.
- ◆ **Digital Kiosk Display:** 21.5/27/32" IPS With 178° Viewing.
- ◆ **Kiosk Machine Printing:** 80mm Thermal, 150mm/s, Crisp Receipts/labels.
- ◆ **Android 11 Platform:** RK3568 Quad- core Up To 2.0GHz.
- ◆ **Flexible I/O Ports:** USB, USB- C OTG, DC, RJ45 Simplify Wiring.
- ◆ **Modular Peripherals:** Scanner, Cameras, Card Reader Plug- and- play.
- ◆ **Service Desk Kiosk:** Customizable Flows For Retail And Public Services.
- ◆ **Mounting Options:** Floor, Desktop, Wall, Motorized Lift Stands.

## Technical Specifications

Item	Specification
Processor / CPU	Rockchip RK3568
Operating System	Android 11 OS
Memory & Storage	2GB RAM+ 16GB ROM
Main Display	21.5"/27"/32" capacitive touchscreen (1920*1080)
Scanner	1D/2D barcode scanner optional
Printer	Built-in 80mm thermal printer optional
Card reader	Optional
Camera	Optional
I/O Ports	USB ×6, LAN ×1,HDMI×1 ,COM×1,DC-in ×1
Networking	Gigabit Ethernet; optional Wi-Fi/Bluetooth via adapter
Power	AC 110-220V 2A
Environmental	Operating 0°C–40°C; Storage –20°C–60°C; 10%–90% RH non-condensing; ESD/Shock: TBD
Recommended Accessories	Scanner,printer,Floor stand,POS terminal holder,NFC,Face recognition camera

## I/O Layout (Reference)

